

Double shaft Mixing Extruder

•The product is suitable for mixing the crushed materials of clay, shale, gangue, fly ash and etc, the mixing extruder have the function of extrusion and cutting clay along with double shaft mixing with water and steam added. It is mainly used for secondary mixing treatment of low plasticity materials with water added in this process. It is usually used next to the aging house.



On-site photo



Mixing by mixing teeth



Cutting the clods into pieces by trowel.

Equipment Accessories Photo



Mixing teeth



Mud cup sealing ring



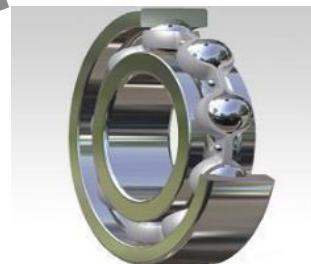
Single direction thrust ball bearing



Tapered roller bearing



Self-aligning roller bearing

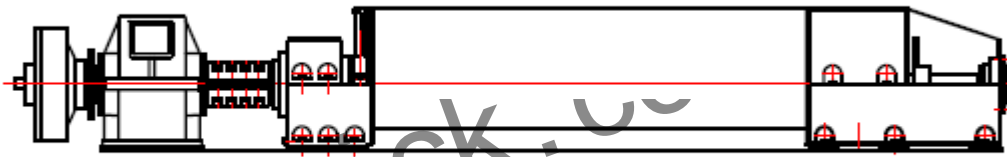


Deep groove ball bearing

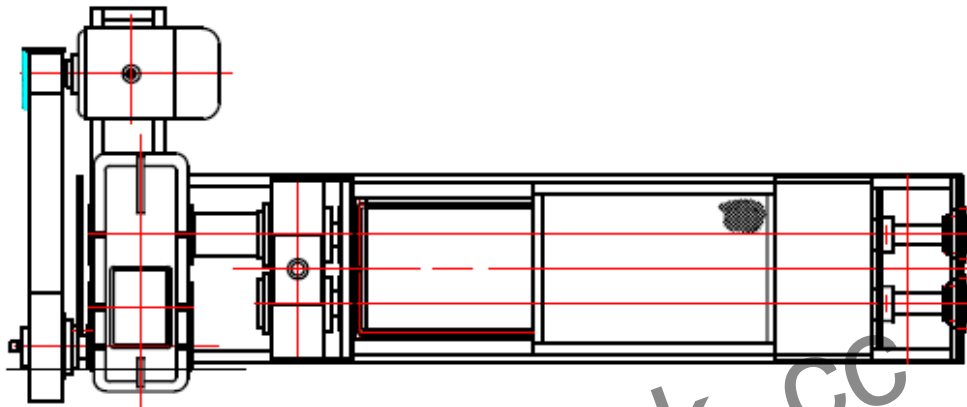


Trowel

Primary structure: clutch, reduction box, gear case, two mixer shafts, mixing teeth, extrusion rimer, trowel teeth, bearing housing assembly, agitator tank, base of mixing body, roof cove of mixing body, lining of mixing body and other parts.



Level view



Top view

Equipment advantages:

The sealing of this machine shell is tight without the phenomenon of ash leakage.

Technical parameters:

Model	Production Capacity (m ³ /h)	Power (Kw)
SJJ300×40	60~90	110
SJJ280×36	30~40	55
SJJ260×32	25~35	55

IBRICK can supply various kinds of double shaft mixer suitable for your materials and production capacity, our products, Our products apply in Russia, Kazakhstan, Uzbekistan, India, Bangladesh, Egypt, Angola, Mexico, Chile, Peru, Brazil and other countries.

Shaanxi Ibrick Technology Co., Ltd

**Add: Rm-B21811, Fortune Plaza, High-Tech
3rd Rd, High-Tech Zone, Xi'an, China**

Tel: 0086-29-63364175

Fax: 0086-29-63364165

Mob: 0086 15991710216

E-mail: info@ibrick.cc

www.ibrick.cc

www.ibrick.cc